



Gas Instrumentation & Flame Detection



Leaders in Gas Detection Since 1983, WireFree Since 2005

Made in the United States of America

BATTERY POWERED



Explosion Proof Sensor

OI-6900

- Electrochemical, PID, or IR sensors available
- Wireless communication
- Battery powered



Explosion Proof Quad

OI-6940

- Up to 4 sensors in one enclosure
- Electrochemical, PID, or IR sensors available
- Wireless communication
- Non XP version available



Non XP Sensor

OI-6900 CUBE

- Electrochemical, PID, or IR sensors available
- Wireless communication
- Battery powered

WIRED POWERED



3-Wire Sensor

OI-6000

- Electrochemical, IR, catalytic bead and PID sensors
- Output options:
 - Wireless 900 MHz or 2.4 GHz
 - 3-wire 4-20 mA analog out
 - RS-485 Modbus output



Non XP Sensor

OI-6000 CUBE

- Electrochemical, IR, Refrigerant or PID sensor element
- 3-wire 4-20 mA
- RS-485 Modbus output
- Relay options available



2-Wire Sensor

OI-6750

- Electrochemical sensor
- 2-wire loop-powered, 4-20 mA out
- 12 to 35 VDC operating voltage

WIRELESS CONTROLLERS

32 Channel

OI-7010



- 32 channel hybrid controller
- RS-485 Modbus Output
- Radio options: 900 MHz radio standard or 2.4 GHz radio
- 12 to 35 VDC operating voltage with optional AC power supply
- 4 programmable relays

32 Channel

OI-7032



- 32 channel hybrid datalogging touchscreen controller
- RS-485 Modbus Output
- Radio options: 900 MHz radio standard or 2.4 GHz radio
- 24 VDC operating voltage with optional AC power supply
- 4 programmable relays

32 Channel

OI-7530



- 3 programmable relays
- Radio options: 900 MHz radio standard or 2.4 GHz radio
- 12 to 35 VDC operating voltage with optional AC power supply
- Output options: wet contact DC fault terminal, relay 3 can optionally be configured as a fault relay, RS-485 Modbus

255 Channel

OI-9850



- RS-232 or RS-485 Modbus Output
- Radio options: 900 MHz radio standard or 2.4 GHz radio
- 12 to 35 VDC operating voltage with optional AC power supply
- Provides optional 4-20 mA outputs, up to 32

WIRED MONITORS

ProSafe 4x32

OI-7432



- 32 channel wired Modbus monitor
- Output options: wet contact DC fault terminal, relay 4 can optionally be configured as a fault relay, RS-485 Modbus

ProSafe 4x8

OI-7480



- 12 channel wired monitor that supports any 4-20 mA wired sensor
- Output options: wet contact DC fault terminal, relay 4 can optionally be configured as a fault relay, RS-485 Modbus

ADD-ONS



Signal Repeater

OI-9900

- Radio options: 900 MHz radio standard or 2.4 GHz radio
- 12 to 35 VDC operating voltage
- Non XP version available



32 Channel

OI-7530 XP

- 32 channel WireFree relays: Contains 3 relays that can be activated by up to 32 remote WireFree sensors
- Radio options: 900 MHz radio standard or 2.4 GHz standard radio
- 12 to 35 VDC operating voltage with optional AC power supply
- Output options: wet contact fault terminal, relay 3 can optionally be configured as a fault relay, RS-485 Modbus



Wireless Signal Meter

OI-9100

- Portable signal-strength meter
- Displays radio signal strength and gas readings
- Communicates with all WireFree sensors on network



OTISLINK

Telemetry



Flame Detectors

UV, Multi-Spectrum IR, UV/IR

ACCESSORIES



NEMA 4/4X Alarm



CID1 Alarm



CID2 LED Strobe

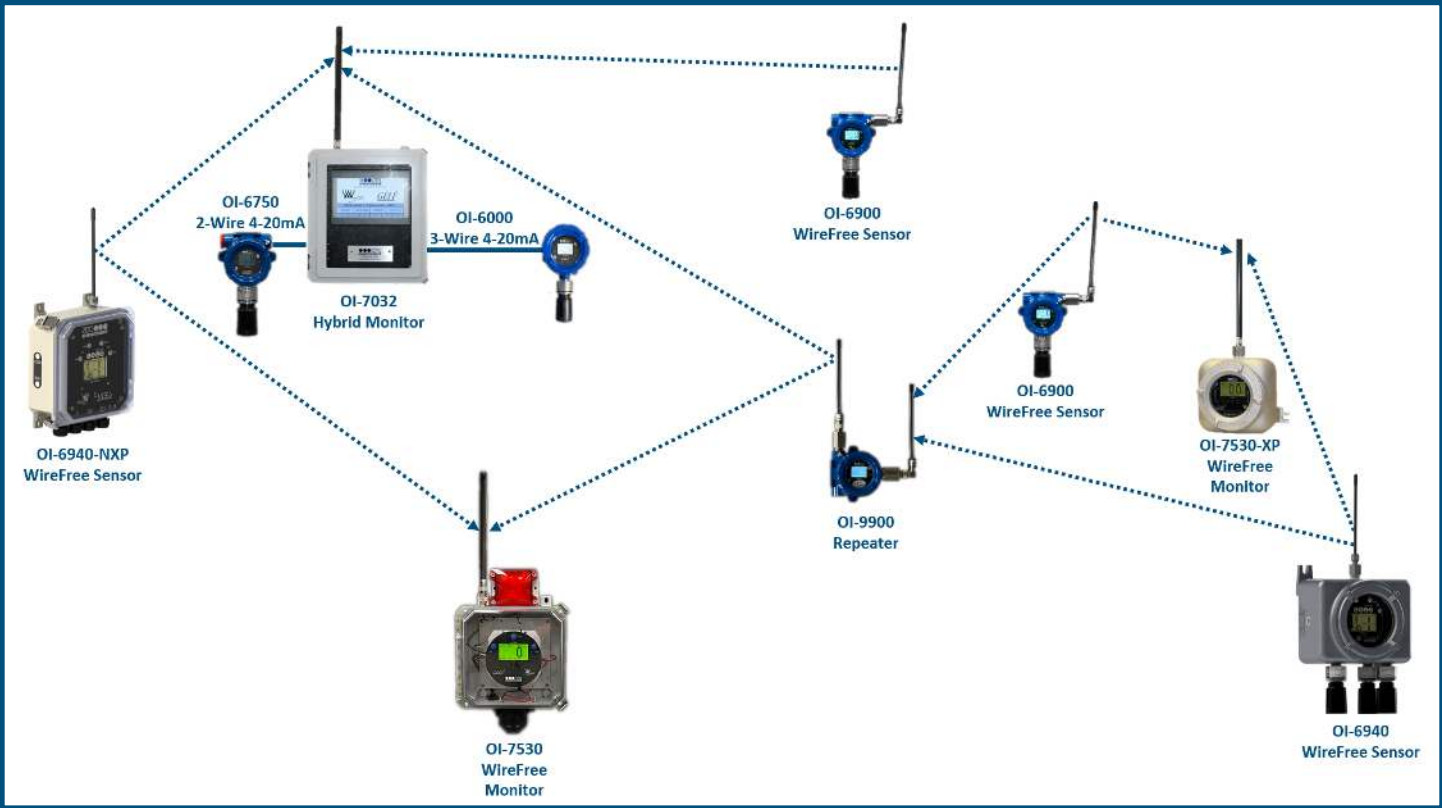


CID1 Horn & Strobe Alarm

Horn & Strobe Alarm

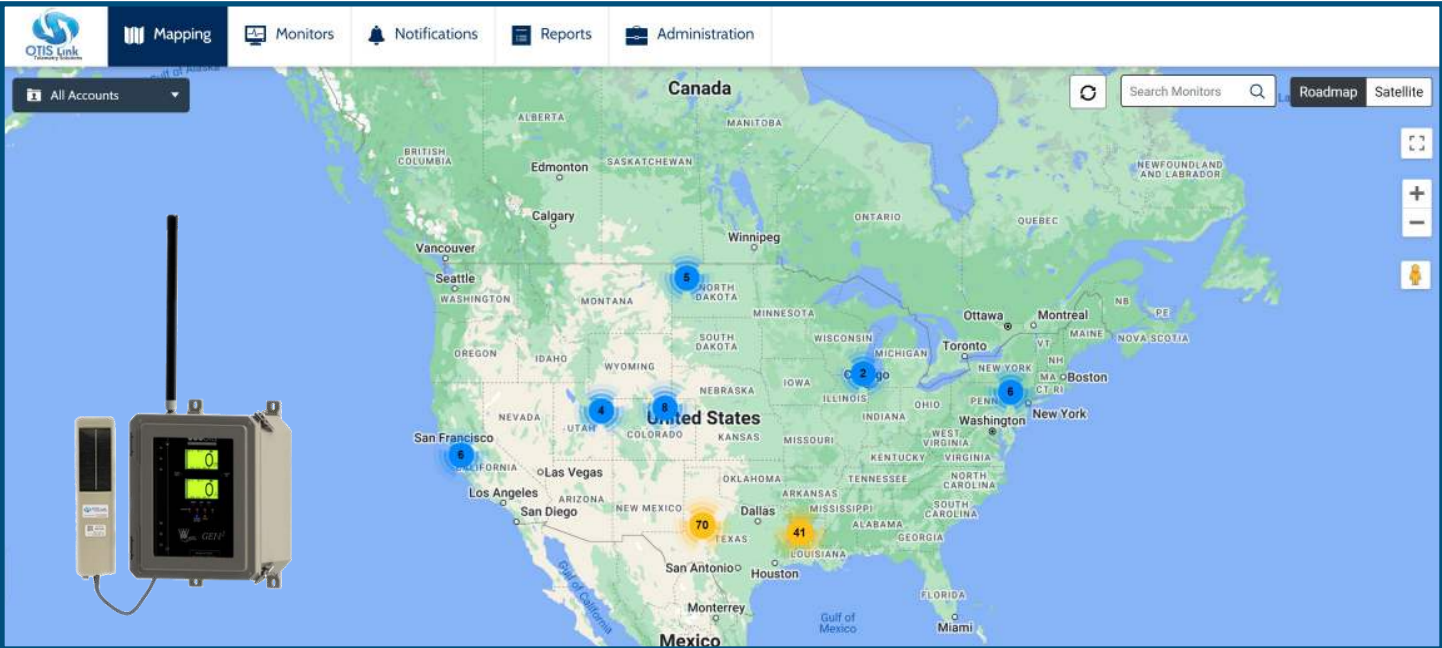


SYSTEM LAYOUT



OTISLINK

DISPLAYS | ALERTS | TRENDS | REPORTS



Gas Name	Range
Arsine - AsH ₃	0-1 PPM
Formaldehyde - CH ₂ O	0-10 PPM
Methyl Mercaptan - CH ₃ SH	0-10 PPM
Chlorine - Cl ₂	0-10 PPM
Chlorine Dioxide - ClO ₂	0-5 PPM
Carbon Monoxide - CO	0-1000 PPM
Ethylene Oxide - EtO	0-10 PPM
Hydrogen - H ₂	0-4% Vol
Hydrogen Sulphide - H ₂ S	0-10 PPM
	0-25 PPM
	0-50 PPM
	0-100 PPM
Hydrogen Chloride - HCl	0-20 PPM
	0-200 PPM
Hydrogen Cyanide - HCN	0-100 PPM
Hydrogen Fluoride - HF	0-10 PPM
Ammonia - NH ₃	0-100 PPM
	0-300 PPM
	0-1000 PPM
Nitrogen Monoxide/Nitric Oxide - NO	0-250 PPM
Nitrogen Dioxide - NO ₂	0-20 PPM
Oxygen - O ₂	0-25% Vol
Ozone - O ₃	0-5 PPM
	0-100 PPM
Phosphine - PH ₃	0-5 PPM
Silane - SiH ₄	0-50 PPM
Sulfur Dioxide - SO ₂	0-20 PPM
Methane - CH ₄	0-100% LEL
	0-100% Vol
Propane - C ₃ H ₈	0-100% LEL
	0-5% Vol
Carbon Dioxide - CO ₂	0-100% Vol
	0-5000 PPM
Refrigerant - R1234yf	0-2000 PPM
Refrigerant - R1234ze	0-2000 PPM
Refrigerant - R134A	0-2000 PPM
Refrigerant - R32	0-2000 PPM
Refrigerant - R404A	0-2000 PPM
Refrigerant - SF ₆	0-2000 PPM
Volatile Organic Compound - VOC - 10.6eV Lamp	0-10 PPM
	0-20 PPM
	0-50 PPM
	0-1000 PPM
Volatile Organic Compound - VOC - 10.0eV Lamp	0-2000 PPM
	0-100 PPM
Volatile Organic Compound - VOC - 11.7ev Lamp	0-100 PPM

CONTACT US

CPS Calibrations

109 S. Front Street

Rockwood, TN 37854

Phone: (865) 900-8844

KSmith@CPSCalibrations.com

www.CPSCalibrations.com



CALIBRATION
PRECISION SPECIALIST

